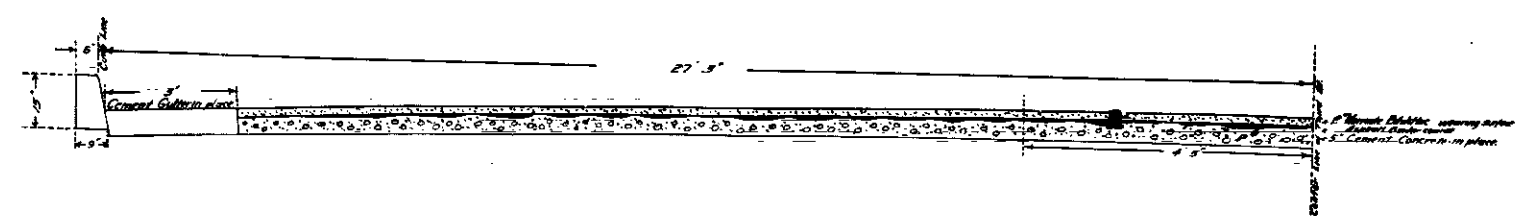
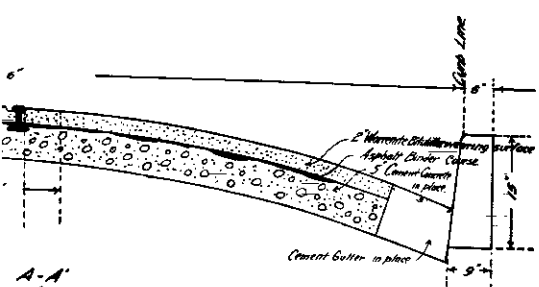
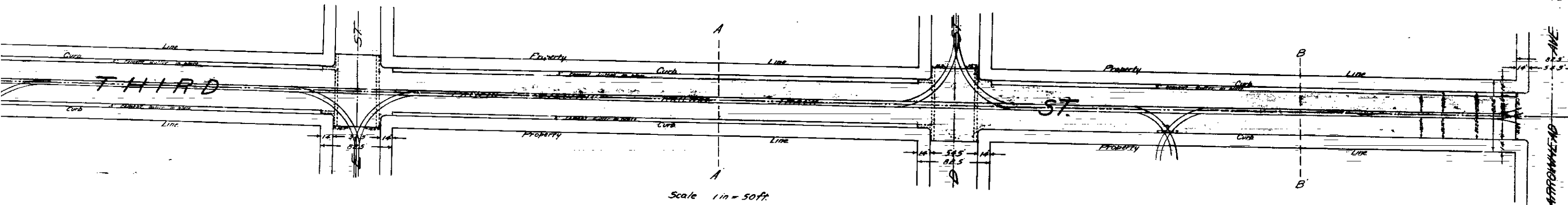
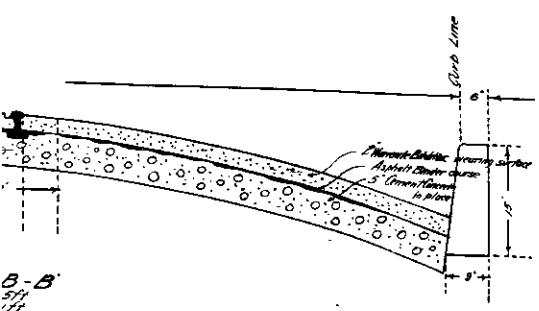


# PLAN

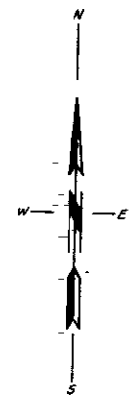


TYPE SECTION  
OF  
ONE HALF STREET  
Scale 1/2" = 1 ft.



NO. 501  
PLANS AND GROSS SECTIONS  
FOR THE IMPROVEMENT  
OF  
**THIRD STREET**  
FROM THE WEST LINE OF ARROWHEAD AVENUE  
TO THE EAST LINE OF E STREET

CITY OF SAN BERNARDINO  
CALIFORNIA  
JANUARY 1920  
City Engineer



## LEGEND

- ft.- means feet or feet
- in or " means inch or inches
- Ave. means Avenue
- St. means Street
- Warm Bit. Wearing Surface shown thus [hatched pattern]
- Asphalt Binder Course shown thus [stippled pattern]
- Concrete Slab shown thus [dotted pattern]
- Cement Grout in place shown thus [solid black]
- Area to be paved shown thus [diagonal lines]
- Asphalt Binder Course shown thus [stippled pattern]
- Block Electric Railway Tracks shown thus [cross-hatched pattern]

155

155  
TO DRAFT